

DETAIL A
SCALE 1:2

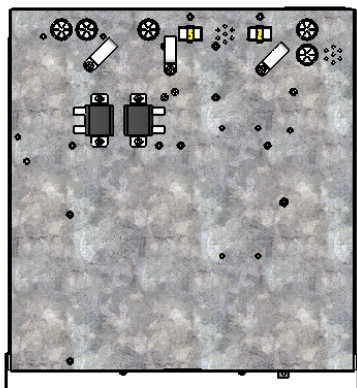
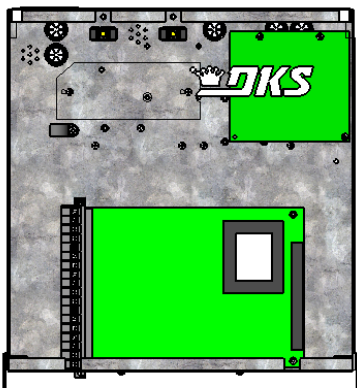
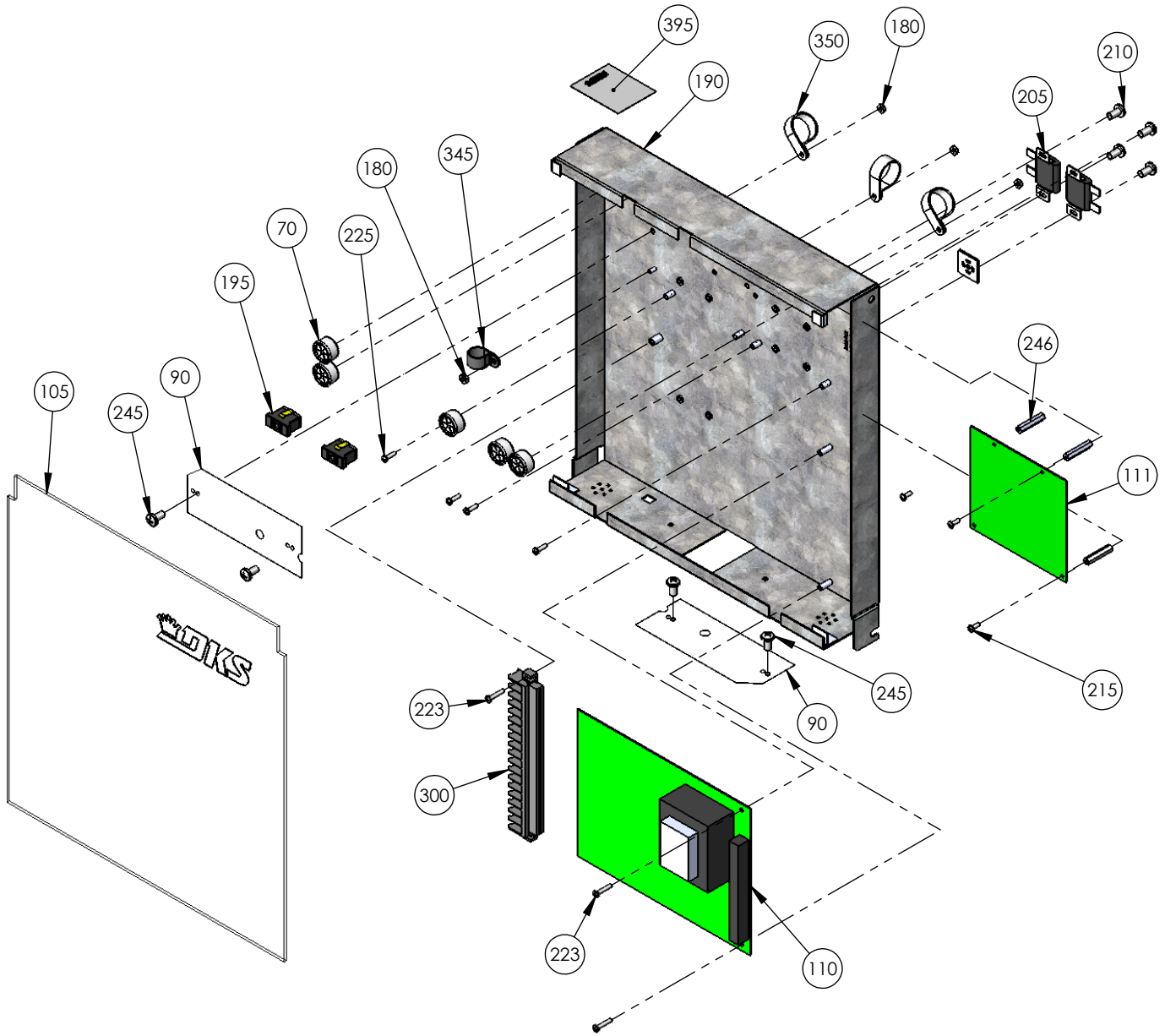
PROPRIETARY AND CONFIDENTIAL
THE INFORMATION CONTAINED IN THIS DRAWING IS THE
SOLE PROPERTY OF Door King.
ANY REPRODUCTION IN PART OR AS A WHOLE WITHOUT
THE WRITTEN PERMISSION OF Door King IS PROHIBITED.



Model 9150-086
1/2Hp 115Volt Batt Backup

SIZE	DWG	REV
A		H
SCALE: 1:12		SHEET 1 of 3

9150-886



PROPRIETARY AND CONFIDENTIAL
 THE INFORMATION CONTAINED IN THIS DRAWING IS THE
 SOLE PROPERTY OF Door King.
 ANY REPRODUCTION IN PART OR AS A WHOLE WITHOUT
 THE WRITTEN PERMISSION OF Door King IS PROHIBITED.



Model 9150-086
 1/2 Hp 115Volt Batt. Backup

SIZE A	DWG	9150-886	REV A
SCALE: 1:8		SHEET 3 of 3	

9150-086

1	9150-066	1	Manual Installation
7	1897-052	2	Gasket, Microphone Support
8	2802-040	2	Washer Push on Clamp
9	2600-732	1	Nameplate Plastic DKS Big
10	2600-852	1	Accessory Box 9150 Operator
15	1801-009	2	Battery 12V 3.4 AmpHour
20	2600-440	1	Bearing Used in Slide Oper
25	2600-453	1	Bearing Holder Plastic Back
30	2600-694	1	Belt - AX36
35	2600-731	1	Gasket Switch Cover
40	2600-533	1	Switch Cover Doorlocking Lockable
50	2600-688	1	Belt - 17" 4L170 Cogged
55	2600-965	1	Bracket Idler Left 9150
60	2600-966	1	Bracket Idler Right 9150
65	2600-938	1	Radio Tray 910
70	2600-810	5	Bushing 7/8 Poke Thru Flaps
80	2600-871	2	Bushing 1/2"ODx5/16"IDx1 5/16L
85	2801-004	1	Clutch Pad 5" OD - 3/4" ID
90	2600-945	2	Cover Plastic Insulator
95	2600-102	1	Capacitor 50uf 370VAC
100	2600-875	1	Capacitor Mounting Clamp
105	9150-006	1	Cover Plastic Model 9150
110	4602-010	1	PCB Slide Gate Operator
111	2340-010	1	PCB Battery Backup
115	2615-153	4	Bolt Hex Head 5/16-18 x 3/4
120	2615-155	2	Bolt Hex Head 5/16-18 x 1 3/4
125	2600-932	1	Door Model 9150
130	2600-880	1	Hole Plug Plastic for 3/8 Hole
135	2600-984	1	Housing-Model 9150
140	4001-035	1	Lock N16058BDxSFx2K Key 16120
145	1702-503	1	Cam 1.1/4
150	2600-917	1	Jam Nut Magnet Subassy 910/915
155	2600-124	1	Motor Assy 1/2 HP Dual Pulley
160	2600-868	1	Motor Base 9150 Battery Bk
165	2600-197	1	Motor 24VDC For BB
166	2620-340	4	Nut Center Lock 1/4-20
167	2902-004	1	Nut Nylon Lock 8-32
170	2902-006	3	Nut Nylon Lock 10-32
175	2620-411	20	Nut Hex Flange Lock 5/16-18
180	2902-003	20	Nut Nylon Lock 6-32
185	2620-409	11	Nut Hex Flange Lock 1/4-20
190	2600-962	1	Mount Plate PC Board Mod 9150
195	1200-028	2	Outlet Snap-In Leviton 1306
200	2600-957	1	Pulley 10 inch Aluminum Assy
205	2600-848	2	Resistor Power 1 ohm 30 Watt
210	2616-006	8	Screw Phillips Head 6-32x3/16
215	2616-002	9	Screw Phillips Head 6-32 x 1/2
220	2616-001	9	Screw Phillips Head 6-32 x 3/8
223	2616-003	3	Screw Phillips Head 6-32x3/4SS
225	2616-000	8	Screw Phillips Head 6-32 x 1/4

230	2616-007	2 Screw Phillips Head 6-32x5/8"
232	2616-019	1 Screw Phillips Head 8-32 x 3/4
235	2616-051	2 Screw Phillips 10-32x3/8
240	2616-052	1 Screw Phillips Head 10-32 x1/2
245	2600-887	4 Screw Nylon Phillips 6-32x1/4"
246	2900-918	3 Standoff Aluminum 1 1/4" 6-32
247	1812-005	1 Switch Push Button N.O.
248	1601-041	2 Switch Toggle SPST 2POS
249	1506-071	1 Tone Generator Loud
250	2600-904	1 Main Shaft Assembly
255	2600-931	1 Bracket Shaft Support 915
260	2600-560	1 Battery Tray 910/1601
265	2600-860	1 Solenoid Lock Assy 91XX
270	2600-446	1 Spring-Compression
290	2600-487	1 Bracket Solenoid Support
300	2901-002	1 Terminal 18 Pin
305	2600-886	2 Idler Wheel UHMW
309	2600-840	2 Jumper- Ring Tongue #8 Screw
310	2600-431	1 Marker Strip Silkscreened
312	3130-008	1 Terminal Block 5 pin
313	3129-005	1 Terminal Block Cover 5 Positio
315	2600-439	1 Washer Cup - Brass
316	2620-028	5 Washer 5/16" USS
320	2600-344	1 Washer 1 1/8"OD x 3/4"ID
322	2600-053	1 Bearing - Thrust 3/4 ID
325	2600-990	1 Washer Neoprene 1.5"x.725"x125
330	2600-345	1 Washer Hardened 1 1/4 x 3/4 ID
335	2620-035	1 Washer 4"ODx3/4"ID
340	2620-053	2 Lockwasher 5/16"
345	2600-619	9 Wire Clip-5/8" Concord 770-1209
350	2600-639	6 Wire Clamp-1"
355	2600-986	1 Wire Set 9150 1/2HP Operator
358	7082-137	1 Wire 5" Green Stranded 14AWG
360	2340-164	1 Wire Set BB 6100,6300,9150
365	1804-031	20 Tie Wrap 4"
367	1804-031	15 Tie Wrap 4"
370	2600-749	2 Wire Connector STA-KON RC6
375	4001-018	7 Weather Stripping 50' rolls
380	2599-034	1 Label Gate Operator
385	4001-093	1 MOV Assembly 130VAC
395	2599-008	1 Label Patent
400	2599-006	1 Decal SUPPLY GND
405	2599-199	1 Label Universal
410	2599-014	1 Decal Copper Wire Only
416	2340-065	1 Manual
420	2599-100	2 Sign Warning