

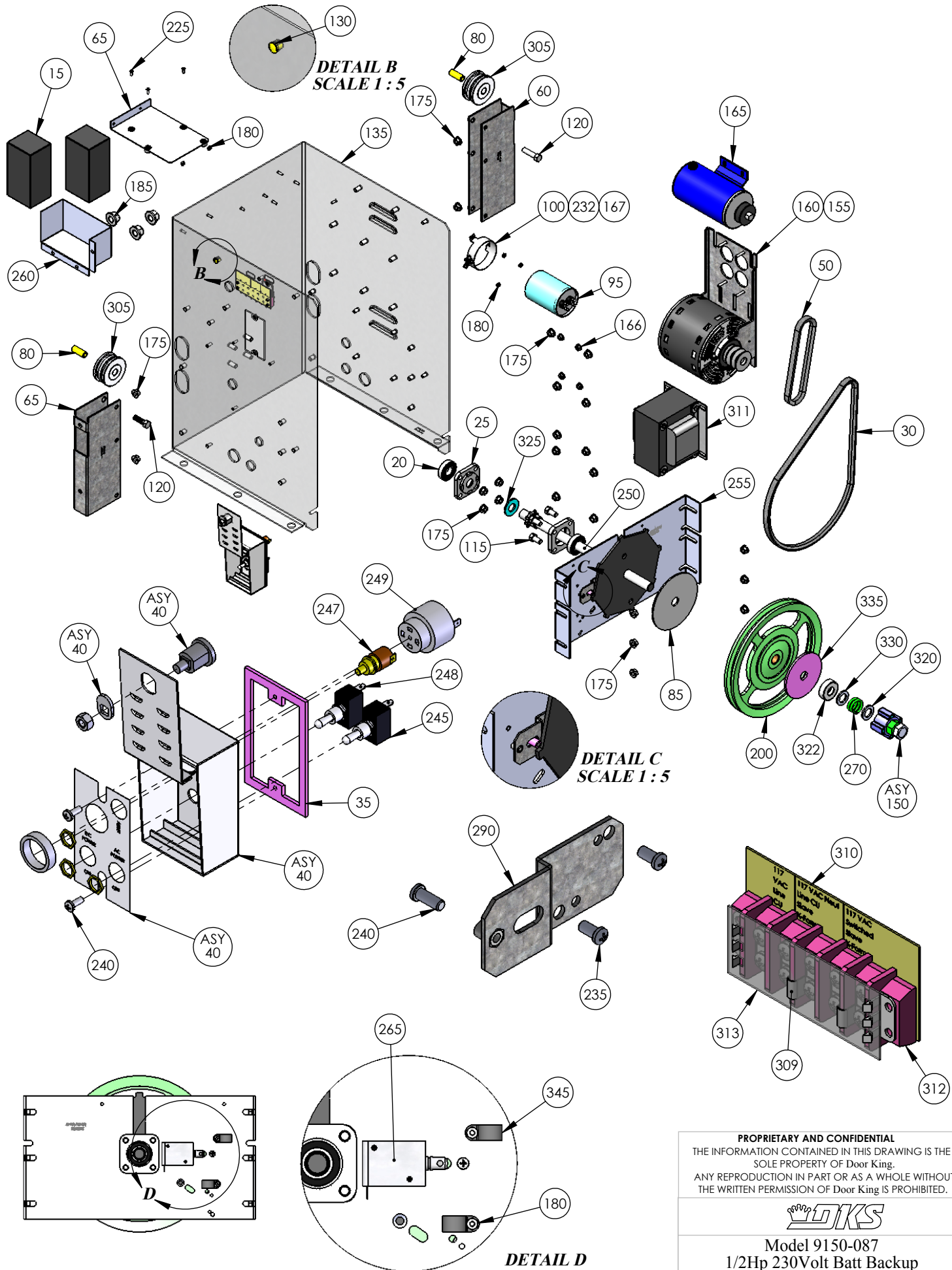
DETAIL A
SCALE 1 : 2

PROPRIETARY AND CONFIDENTIAL
THE INFORMATION CONTAINED IN THIS DRAWING IS THE
SOLE PROPERTY OF Door King.
ANY REPRODUCTION IN PART OR AS A WHOLE WITHOUT
THE WRITTEN PERMISSION OF Door King IS PROHIBITED.



Model 9150-087
1/2Hp 230Volt Batt Backup

SIZE	DWG	REV
A	9150-887	H
SCALE:1:12		SHEET 1 of 3

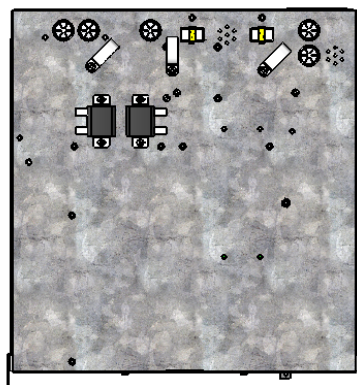
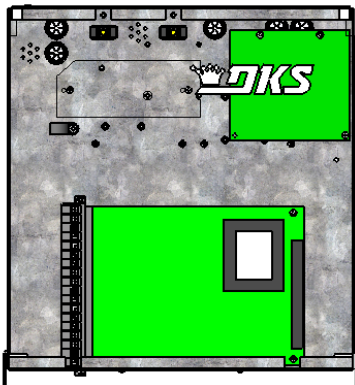
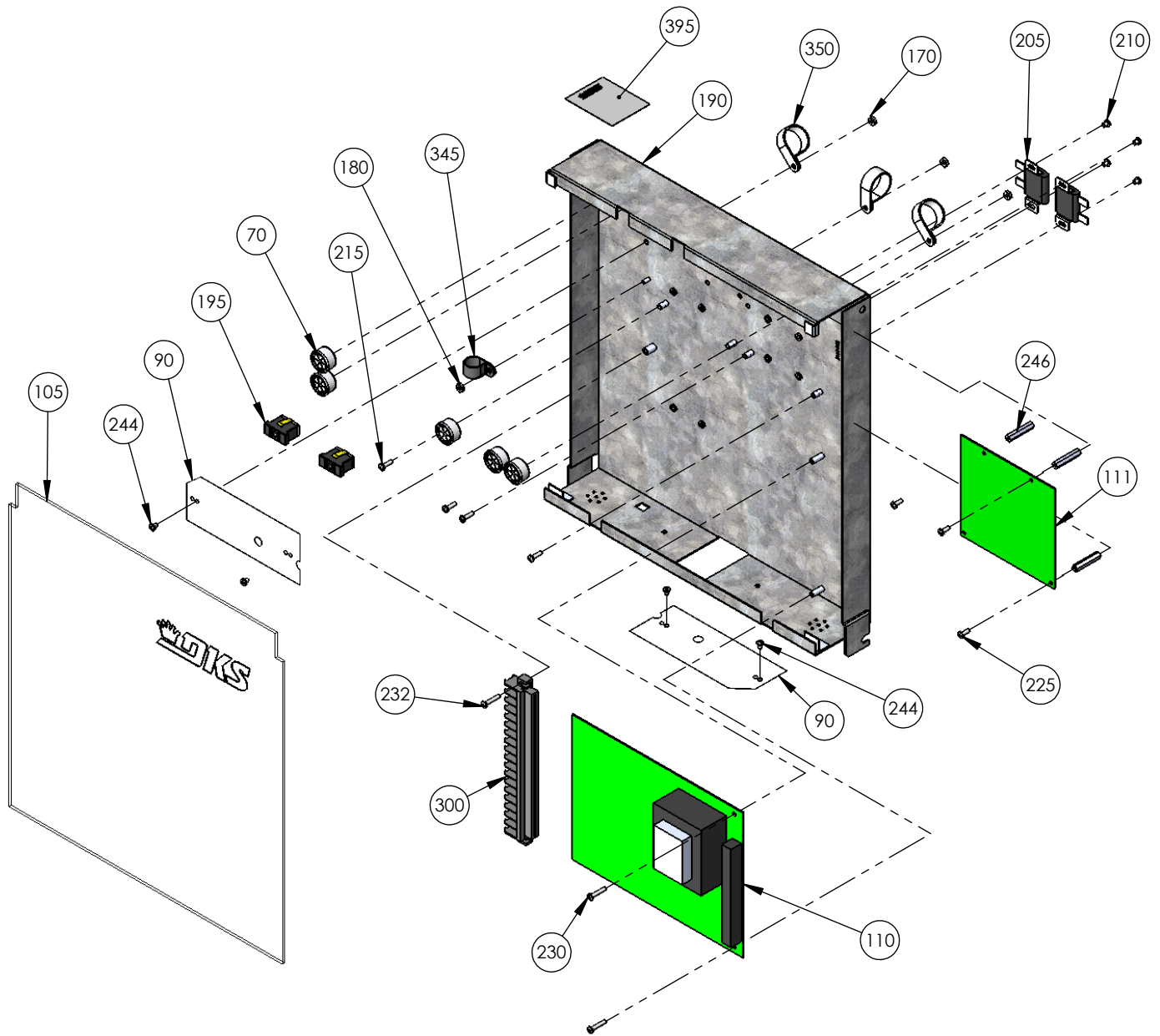


PROPRIETARY AND CONFIDENTIAL
 THE INFORMATION CONTAINED IN THIS DRAWING IS THE
 SOLE PROPERTY OF Door King.
 ANY REPRODUCTION IN PART OR AS A WHOLE WITHOUT
 THE WRITTEN PERMISSION OF Door King IS PROHIBITED.

DKS

Model 9150-087
 1/2Hp 230Volt Batt Backup

SIZE	DWG	9150-887	REV
A			A
SCALE: 1:2		SHEET 2 of 3	



PROPRIETARY AND CONFIDENTIAL
 THE INFORMATION CONTAINED IN THIS DRAWING IS THE
 SOLE PROPERTY OF Door King.
 ANY REPRODUCTION IN PART OR AS A WHOLE WITHOUT
 THE WRITTEN PERMISSION OF Door King IS PROHIBITED.



Model 9150-087
 1/2Hp 230Volt Batt Backup

SIZE	DWG	REV
A		H
SCALE: 1:8	9150-887	SHEET 3 of 3

9150-087	Part #	Qt	Description
	1 9150-066	1	Manual Installation
	7 1897-052	2	Gasket, Microphone Support
	8 2802-040	2	Washer Push on Clamp
	9 2600-732	1	Nameplate Plastic DKS Big
	10 2600-852	1	Accessory Box 9150 Operator
	15 1801-009	2	Battery 12V 3.4 AmpHour
	20 2600-440	1	Bearing Used in Slide Oper
	25 2600-453	1	Bearing Holder Plastic Back
	30 2600-694	1	Belt - AX36
	35 2600-731	1	Gasket Switch Cover
	40 2600-533	1	Switch Cover Doorlocking Lockable
	50 2600-688	1	Belt - 17" 4L170 Cogged
	55 2600-965	1	Bracket Idler Left 9150
	60 2600-966	1	Bracket Idler Right 9150
	65 2600-938	1	Radio Tray 910
	70 2600-810	5	Bushing 7/8 Poke Thru Flaps
	80 2600-871	2	Bushing 1/2"ODx5/16"IDx1 5/16L
	85 2801-004	1	Clutch Pad 5" OD - 3/4" ID
	90 2600-945	2	Cover Plastic Insulator
	95 2600-102	1	Capacitor 50uf 370VAC
	100 2600-875	1	Capacitor Mounting Clamp
	105 9150-006	1	Cover Plastic Model 9150
	110 4602-010	1	PCB Slide Gate Operator
	111 2340-010	1	PCB Battery Backup
	115 2615-153	4	Bolt Hex Head 5/16-18 x 3/4
	120 2615-155	2	Bolt Hex Head 5/16-18 x 1 3/4
	125 2600-932	1	Door Model 9150
	130 2600-880	1	Hole Plug Plastic for 3/8 Hole
	135 2600-984	1	Housing-Model 9150
	140 4001-035	1	Lock N16058BDxSFx2K Key 16120
	145 1702-503	1	Cam 1.1/4
	150 2600-917	1	Jam Nut Magnet Subassy 910/915
	155 2600-124	1	Motor Assy 1/2 HP Dual Pulley
	160 2600-868	1	Motor Base 9150 Battery Bk
	165 2600-197	1	Motor 24VDC For BB
	166 2620-340	4	Nut Center Lock 1/4-20
	167 2902-004	1	Nut Nylon Lock 8-32
	170 2902-006	3	Nut Nylon Lock 10-32
	175 2620-411	20	Nut Hex Flange Lock 5/16-18
	180 2902-003	20	Nut Nylon Lock 6-32
	185 2620-409	11	Nut Hex Flange Lock 1/4-20
	190 2600-962	1	Mount Plate PC Board Mod 9150
	195 1200-028	2	Outlet Snap-In Leviton 1306
	200 2600-957	1	Pulley 10 inch Aluminum Assy
	205 2600-848	2	Resistor Power 1 ohm 30 Watt
	210 2616-006	8	Screw Phillips Head 6-32x3/16
	215 2616-002	9	Screw Phillips Head 6-32 x 1/2
	220 2616-001	9	Screw Phillips Head 6-32 x 3/8
	223 2616-003	3	Screw Phillips Head 6-32x3/4SS
	225 2616-000	8	Screw Phillips Head 6-32 x 1/4

230	2616-007	2 Screw Phillips Head 6-32x5/8"
232	2616-019	1 Screw Phillips Head 8-32 x 3/4
235	2616-051	2 Screw Phillips 10-32x3/8
240	2616-052	1 Screw Phillips Head 10-32 x1/2
245	2600-887	4 Screw Nylon Phillips 6-32x1/4"
246	2900-918	3 Standoff Aluminum 1 1/4" 6-32
247	1812-005	1 Switch Push Button N.O.
248	1601-041	2 Switch Toggle SPST 2POS
249	1506-071	1 Tone Generator Loud
250	2600-904	1 Main Shaft Assembly
255	2600-931	1 Bracket Shaft Support 915
260	2600-560	1 Battery Tray 910/1601
265	2600-860	1 Solenoid Lock Assy 91XX
270	2600-446	1 Spring-Compression
290	2600-487	1 Bracket Solenoid Support
300	2901-002	1 Terminal 18 Pin
305	2600-886	2 Idler Wheel UHMW
309	2600-840	2 Jumper- Ring Tongue #8 Screw
310	2600-431	1 Marker Strip Silkscreened
312	3130-008	1 Terminal Block 5 pin
313	3129-005	1 Terminal Block Cover 5 Positio
315	2600-439	1 Washer Cup - Brass
316	2620-028	5 Washer 5/16" USS
320	2600-344	1 Washer 1 1/8"OD x 3/4"ID
322	2600-053	1 Bearing - Thrust 3/4 ID
325	2600-990	1 Washer Neoprene 1.5"x.725"x125
330	2600-345	1 Washer Hardened 1 1/4 x 3/4 ID
335	2620-035	1 Washer 4"ODx3/4"ID
340	2620-053	2 Lockwasher 5/16"
345	2600-619	9 Wire Clip-5/8" Concord 770-1209
350	2600-639	6 Wire Clamp-1"
355	2600-986	1 Wire Set 9150 1/2HP Operator
358	7082-137	1 Wire 5" Green Stranded 14AWG
360	2340-164	1 Wire Set BB 6100,6300,9150
365	1804-031	20 Tie Wrap 4"
367	1804-031	15 Tie Wrap 4"
370	2600-749	2 Wire Connector STA-KON RC6
375	4001-018	7 Weather Stripping 50' rolls
380	2599-034	1 Label Gate Operator
385	4001-093	1 MOV Assembly 130VAC
395	2599-008	1 Label Patent
400	2599-006	1 Decal SUPPLY GND
405	2599-199	1 Label Universal
410	2599-014	1 Decal Copper Wire Only
416	2340-065	1 Manual
420	2599-100	2 Sign Warning