

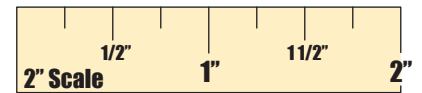
# HEADLIGHT/WINDSHIELD TAG FOR LONG RANGE ANTENNA

DoorKing Part Number  
**1508-195**

The Headlight/windshield TAG is designed to be used with the DKS 1815-350 Long Range Reader. The Tag does not contain a battery, so it never wears out. The UHF long range antenna emits an RF signal which powers the Tag when the Tag enters the scanning area of the antenna. The Tag relays its Wiegand number back to the antenna which reports the Tag's number to a connected access control system. The Tag is an effortless way to open a gate for an **AUTHORIZED** vehicle.

## Information

**Note:** Wiegand code for the tag is printed on the outside of the envelope that the tag was shipped in.



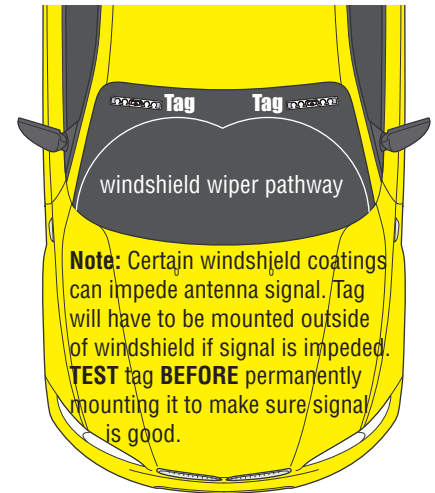
Tag may be mounted on the headlight (**BEST RECEPTION**) or windshield **NO closer than 2" away from any metal**. The farther away from metal, the better the reception. **ONLY mount tag horizontally as shown. DO NOT** mount tag vertically. It should be mounted out of the pathway of the windshield wiper blade when mounted outside. Clear adhesive tape **MUST** be placed over the tag to protect it from weather and car washing.

Clear Adhesive Tape Mounted Over Tag for Protection (REQUIRED)

Standard Headlight

Brightest Part of Light

**IMPORTANT:** Mounting this tag on a headlight is illegal in some states. Check with your State Department of Transportation before mounting tags on headlights.



**Note:** Certain windshield coatings can impede antenna signal. Tag will have to be mounted outside of windshield if signal is impeded. **TEST** tag **BEFORE** permanently mounting it to make sure signal is good.

## Tag Styles

horizontally mounted

Remove protective backing from tags

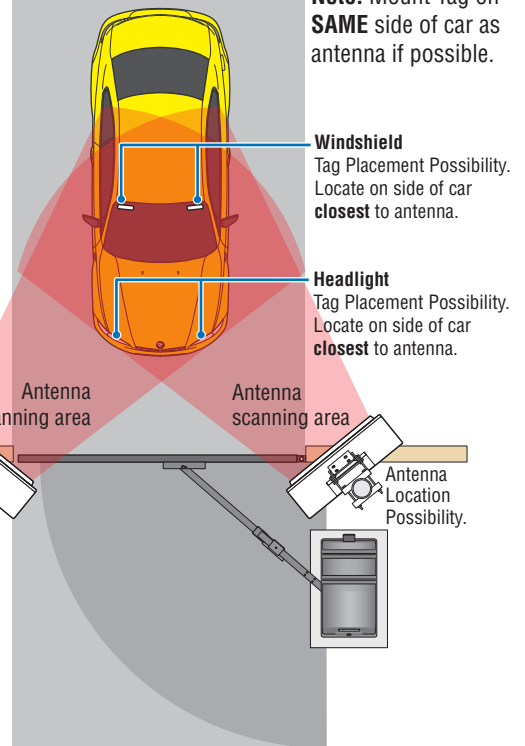
**BEFORE INSTALLATION:** Temporarily tape tag in place and **TEST** tag **BEFORE** permanently mounting it.

## Light Protection for Chip

Black dot stickers mounted on **BOTH** sides of the tag will protect the chip (located in the center of the tag) from the intense light.

Chip Location

Illustration not to scale



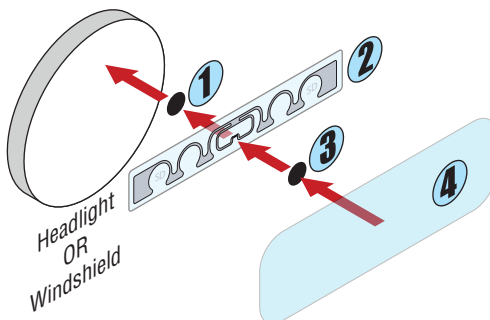
**Note:** Mount Tag on **SAME** side of car as antenna if possible.

**Windshield** Tag Placement Possibility. Locate on side of car **closest** to antenna.

**Headlight** Tag Placement Possibility. Locate on side of car **closest** to antenna.

## INSTALLATION

- 1 Black Dot Sticker
- 2 Tag
- 3 Black Dot Sticker
- 4 Protective Clear Adhesive Tape



When mounting on headlight, place tag **off center** and **away from the brightest part of the light**. Make sure to turn head light **ON** during test.

Some headlights, when turned **ON**, will **impede antenna signal** when tag is positioned **directly over** the brightest part of the light. Light Protection Chip Tag helps correct this.

**The Tags will be destroyed if removed after permanently mounting.**

Make sure surface is **CLEAN** before mounting tag with the clear adhesive tape.

**DKS**  
**DOOR KING**  
120 S. Glasgow Avenue  
Inglewood, California 90301 U.S.A.